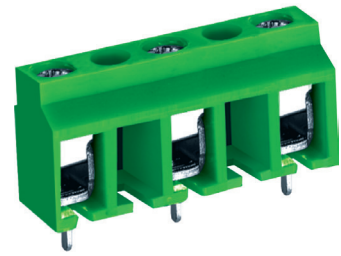
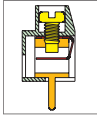


# MA311 PCB Terminal Block, Single Mold



## DIMENSIONS/POSITIONS

	MA311-500	MA311-100
Pitch	5.00mm	10.00mm
Poles	2 ~ 24Poles	2 ~ 14Poles
Dimension A	5.00mm	10.00mm
Length	A= 5.00xP(P≥2)	A= (10.00xP)-5mm(P≥2)
Housing Material	PA 66	PA 66
Spring	Brass, Gold, Tin or Ni Plated	Brass, Gold, Tin or Ni Plated
Contact	Brass, Tin Plated	Stainless Steel
Screw Thread	M2.6, Steel, Zinc Plated	M2.6, Steel, Zinc Plated
Wire Size	14 ~ 26AWG	14 ~ 26AWG
PCB Hole Diameter	1.4mm	1.4mm
Tightening Torque, Max.	4.0 Lb-in	3.0 Lb-in
Operating Temperature	-40°C to +105°C	-40°C to +105°C

## TECHNICAL DATA

Connection in acc. with standard EN-VDE		
Nominal Current I <sub>N</sub>	10A	15A
Nominal Cross Section	-	-
Maximum load current	10A	15A
Insulating Material	PA	PA
Inflammability class acc. to UL94	V0	V0
Nominal voltage, UL/CUL	300V	300V
Nominal current, UL/CUL	10A	15A

