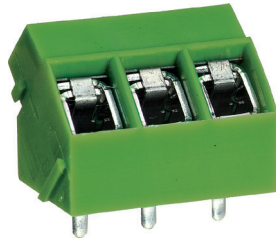
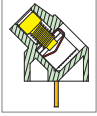


MA325 PCB Terminal Block, Modular



DIMENSIONS/POSITIONS

	MA325-500M	MA325-508M
Pitch	5.00mm	5.08mm
Poles	2 ~ 3Poles	2 ~ 3Poles
Dimension A	5.00mm	5.08mm
Length	A= 5.00xP(P≥2)	A= 5.08xP(P≥2)
Housing Material	PA 66	PA 66
Spring	Stainless Steel	Stainless Steel
Contact	Brass, Tin Plated	Brass, Tin Plated
Screw Thread	M2.6, Steel, Zinc Plated	M2.6, Steel, Zinc Plated
Wire Size	18 ~ 22AWG	18 ~ 22AWG
PCB Hole Diameter	1.6mm	1.6mm
Tightening Torque, Max.	4.0 Lb-in	4.0 Lb-in
Operating Temperature	-40°C to +105°C	-40°C to +105°C

TECHNICAL DATA

Connection in acc. with standard EN-VDE		
Nominal Current I _N	10A	10A
Nominal Cross Section	0.75mm ²	0.75mm ²
Maximum load current	10A	10A
Insulating Material	PA	PA
Inflammability class acc. to UL94	V0	V0
Nominal voltage, UL/CUL	300V	300V
Nominal current, UL/CUL	10A	10A

