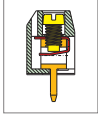
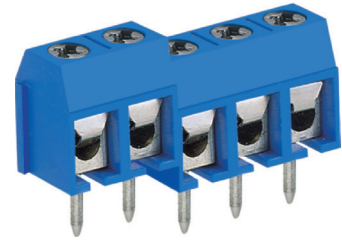
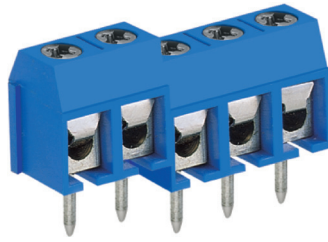


# MA412 PCB Terminal Block, Modular



MA412-500M



## DIMENSIONS/POSITIONS

	MA412-500M	MA412-508M
Pitch	5.00mm	5.08mm
Poles	2 ~ 3Poles	2 ~ 3Poles
Dimension A	5.00mm	5.08mm
Length	A= 5.00xP(P≥2)	A= 5.08xP(P≥2)
Housing Material	PA 66	PA 66
Spring	Stainless Steel	Stainless Steel
Contact	Brass, Tin Plated	Brass, Tin Plated
Screw Thread	M2.6, Steel, Zinc Plated	M2.6, Steel, Zinc Plated
Wire Size	12 ~ 26AWG	16~24AWG
PCB Hole Diameter	1.4mm	1.4mm
Tightening Torque, Max.	4.0 Lb-in	4.0 Lb-in
Operating Temperature	-40°C to +105°C	-40°C to +105°C

## TECHNICAL DATA

Connection in acc. with standard EN-VDE		
Nominal Current I <sub>N</sub>	16A	16A
Nominal Cross Section	1.5mm <sup>2</sup>	1.5mm <sup>2</sup>
Maximum load current	16A	16A
Insulating Material	PA	PA
Inflammability class acc. to UL94	V0	V0
Nominal voltage, UL/CUL	300V	300V
Nominal current, UL/CUL	16A	16A

