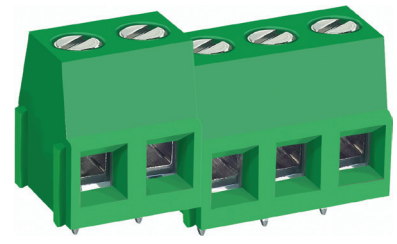
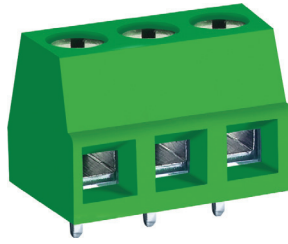
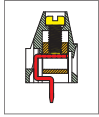


MB310 PCB Terminal Block, Single Mold /Modular



DIMENSIONS/POSITIONS

	MB310-500	MB310-500M
Pitch	5.00mm	5.00mm
Poles	2 ~ 24Poles	2 ~ 3Poles
Dimension A	5.00mm	5.00mm
Length	A= 5.00xP(P≥2)	A= 5.00xP(P≥2)
Housing Material	PA 66	PA 66
Cage Clamp	Steel	Steel
Contact	Brass, Tin Plated	Brass, Tin Plated
Screw Thread	M2.6, Steel, Zinc Plated	M2.6, Steel, Zinc Plated
Wire Size	12 ~ 26AWG	12 ~ 26AWG
PCB Hole Diameter	1.5mm	1.5mm
Tightening Torque, Max.	7.0 Lb-in	7.0 Lb-in
Operating Temperature	-40°C to +105°C	-40°C to +105°C

TECHNICAL DATA

Connection in acc. with standard EN-VDE		
Nominal Current I _N	16A	16A
Nominal Cross Section	4.0mm ²	4.0mm ²
Maximum load current	16A	16A
Insulating Material	PA	PA
Inflammability class acc. to UL94	V0	V0
Nominal voltage, UL/CUL	300V	300V
Nominal current, UL/CUL	16A	16A

