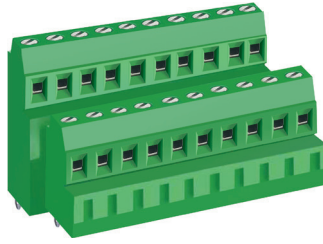
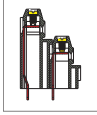


MB362 PCB Terminal Block, Single Mold



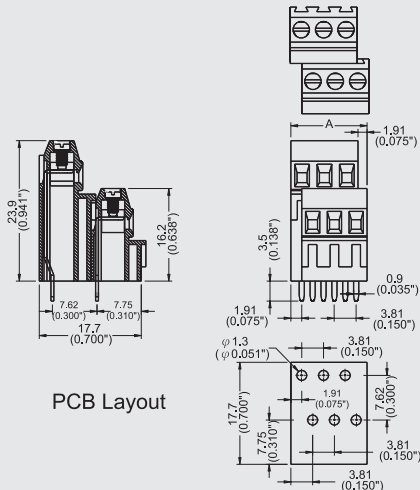
DIMENSIONS/POSITIONS

MB362-381B

Pitch	3.81mm
Poles	4 ~ 32Poles
Dimension A	3.81mm
Length	A=3.81xP/2 + 1.90mm (P≥4)
Housing Material	PA 66
Cage Clamp	Brass, Ni Plated
Contact	Brass, Tin Plated
Screw Thread	M2.0, Steel, Zinc Plated
Wire Size	16 ~ 26AWG
PCB Hole Diameter	1.3mm
Tightening Torque, Max.	1.5 Lb-in
Operating Temperature	-40°C to +105°C

TECHNICAL DATA

Connection in acc. with standard EN-VDE	
Nominal Current I _N	10A
Nominal Cross Section	2.5mm ²
Maximum load current	10A
Insulating Material	PA
Inflammability class acc. to UL94	V0
Nominal voltage, UL/CUL	300V
Nominal current, UL/CUL	10A



PCB Layout