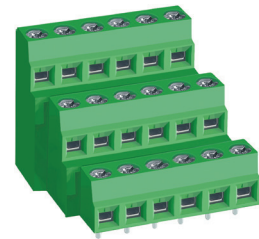
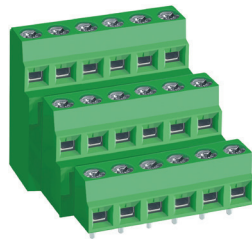
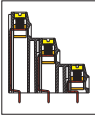


# MB662 PCB Terminal Block

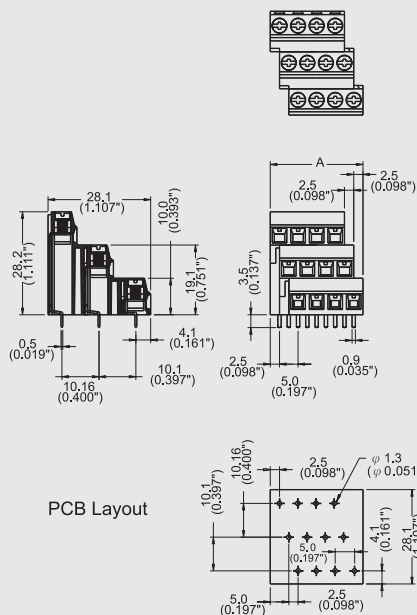


## DIMENSIONS/POSITIONS

|                         | MB662-500                | MB662-508                |
|-------------------------|--------------------------|--------------------------|
| Pitch                   | 5.00mm                   | 5.08mm                   |
| Poles                   | 6 ~ 48Poles              | 6 ~ 48Poles              |
| Dimension A             | 5.00mm                   | 5.08mm                   |
| Length                  | A= 5.00xP/3+5.00mm(P≥6)  | A= 5.08xP/3+5.08mm(P≥6)  |
| Housing Material        | PA 66                    | PA 66                    |
| Cage Clamp              | Brass, Ni Plated         | Brass, Ni Plated         |
| Contact                 | Brass, Tin Plated        | Brass, Tin Plated        |
| Screw Thread            | M2.6, Steel, Zinc Plated | M2.6, Steel, Zinc Plated |
| Wire Size               | 14 ~ 26AWG               | 14 ~ 26AWG               |
| PCB Hole Diameter       | 1.3mm                    | 1.3mm                    |
| Tightening Torque, Max. | 4.5 Lb-in                | 4.5 Lb-in                |
| Operating Temperature   | -40°C to +105°C          | -40°C to +105°C          |

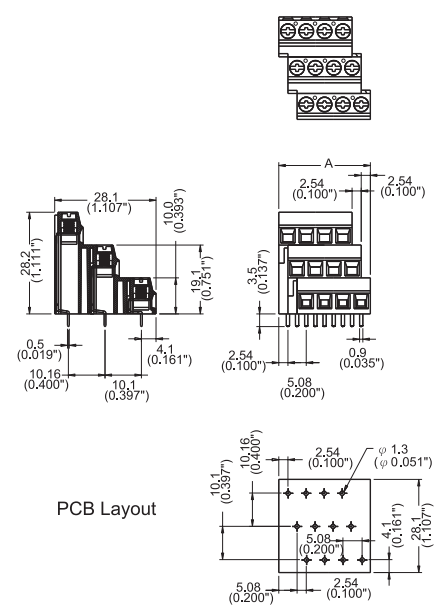
## TECHNICAL DATA

|   |                    |                    |
|---|--------------------|--------------------|
| Connection in acc. with standard EN-VDE |                    |                    |
| Nominal Current I <sub>N</sub>          | 16A                | 16A                |
| Nominal Cross Section                   | 1.5mm <sup>2</sup> | 1.5mm <sup>2</sup> |
| Maximum load current                    | 16A                | 16A                |
| Insulating Material                     | PA                 | PA                 |
| Inflammability class acc. to UL94       | V0                 | V0                 |
| Nominal voltage, UL/CUL                 | 300V               | 300V               |
| Nominal current, UL/CUL                 | 16A                | 16A                |



PCB Layout

Note:  
Screw Plating: Changes are available upon request



PCB Layout

Note:  
Screw Plating: Changes are available upon request