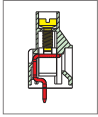


# MB912 PCB Terminal Block, Modular



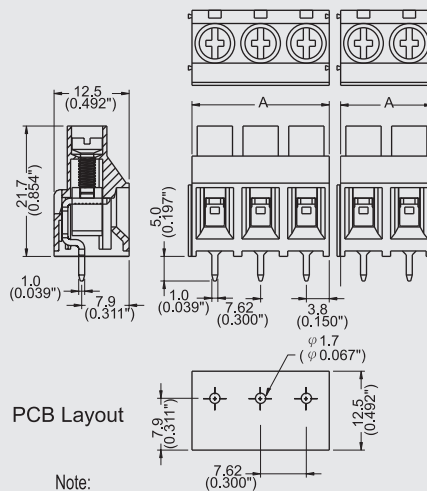
## DIMENSIONS/POSITIONS

### MB912-762M

Pitch	7.62mm
Poles	2 ~ 3Poles
Dimension A	7.62mm
Length	A = 7.62xP (P ≥ 2)
Housing Material	PA 66
Cage Clamp	Brass, Ni Plated
Contact	Brass, Tin Plated
Screw Thread	M3.0, Steel, Zinc Plated
Wire Size	10 ~ 24AWG
PCB Hole Diameter	1.7mm
Tightening Torque, Max.	5.5 Lb-in
Operating Temperature	-40°C to +105°C

## TECHNICAL DATA

Connection in acc. with standard EN-VDE	
Nominal Current I <sub>N</sub>	30A
Nominal Cross Section	6.0mm <sup>2</sup>
Maximum load current	30A
Insulating Material	PA
Inflammability class acc. to UL94	V0
Nominal voltage, UL/CUL	300V
Nominal current, UL/CUL	30A



Note:  
 Screw Plating: Changes are available upon request  
 Cage Clamp: MB910: Steel