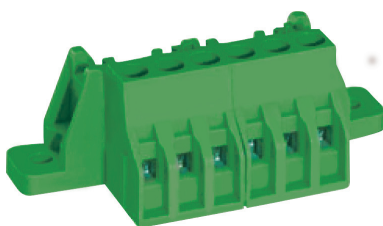
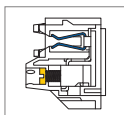


## MC031 Pluggable PCB Connectors with Flanges



### DIMENSIONS/POSITIONS

### MC031-500

Pitch	5.00mm
Poles	3Poles
Dimension A	5.00mm
Length	A= 5.00xP(P=3)
Housing Material	PA 66
Cage Clamp	Brass, Ni Plated
Contact	Phosphor Bronze, Tin Plated
Screw Thread	M2.5, Steel, Zinc Plated
Wire Size	12 ~ 28AWG
Tightening Torque, Max.	4.34 Lb-in
Operating Temperature	-40°C to +105°C

### TECHNICAL DATA

Connection in acc. with standard EN-VDE	
Nominal Current I <sub>N</sub>	6A
Nominal Cross Section	-
Maximum load current	6A
Insulating Material	PA
Inflammability class acc. to UL94	V0
Nominal voltage, UL/CUL	300V
Nominal current, UL/CUL	6A

