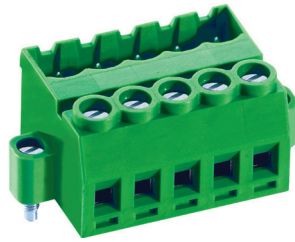
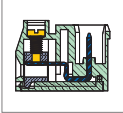


MC123 Pluggable PCB Connector, Plug with Flanges



DIMENSIONS/POSITIONS

MC123-508

Pitch	5.08mm
Poles	2 ~ 20Poles
Dimension A	5.08mm
Length	A= 5.08xP+1.28mm(P≥2)
Housing Material	PA 66
Cage Clamp	Brass, Tin Plated
Contact	Brass, Tin Plated
Screw Thread	M3.0, Steel, Zinc Plated
Wire Size	12 ~ 24AWG
Tightening Torque, Max.	4.5 Lb-in
Operating Temperature	-40°C to +105°C

TECHNICAL DATA

Connection in acc. with standard EN-VDE	
Nominal Current I _N	10A
Nominal Cross Section	2.5mm ²
Maximum load current	10A
Insulating Material	PA
Inflammability class acc. to UL94	V0
Nominal voltage, UL/CUL	300V
Nominal current, UL/CUL	10A

