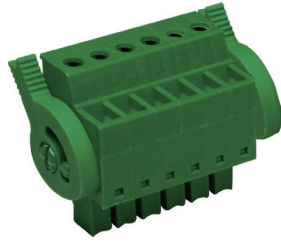
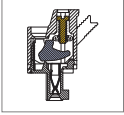


## MC312 Pluggable PCB Connector, Plug



### DIMENSIONS/POSITIONS

### MC312-381

Pitch	3.81mm
Poles	2 ~ 20Poles
Dimension A	3.81mm
Length	A= 3.81xP+7.20mm(P≥2)
Housing Material	PA 66
Cage Clamp	Steel, Zinc Plated
Contact	Phosphor Bronze, Tin Plated
Screw Thread	M2.0, Steel, Zinc Plated
Wire Size	16 ~ 30AWG
Tightening Torque, Max.	2.50 Lb-in
Operating Temperature	-40°C to +105°C

### TECHNICAL DATA

Connection in acc. with standard EN-VDE	
Nominal Current I <sub>N</sub>	8A
Nominal Cross Section	-
Maximum load current	8A
Insulating Material	PA
Inflammability class acc. to UL94	V0
Nominal voltage, UL/CUL	300V
Nominal current, UL/CUL	8A

