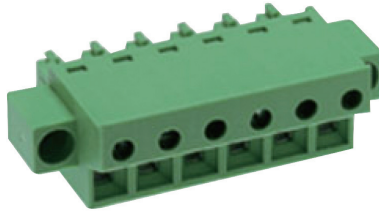
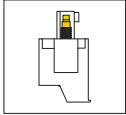


MC321 Pluggable PCB Connectors, Plug with Flanges



DIMENSIONS/POSITIONS

MC321-508

Pitch	5.08mm
Poles	2 ~ 24Poles
Dimension A	5.08mm
Length	$A = 5.08 \times (P-1) + 4.60 \text{mm} (P \geq 2)$
Housing Material	PA 66
Cage Clamp	Brass, Ni Plated
Contact	Phosphor Bronze, Tin Plated
Screw Thread	M2.0, Steel, Zinc Plated
Wire Size	14 ~ 28AWG
Tightening Torque, Max.	2.57 Lb-in
Operating Temperature	-40°C to +105°C

TECHNICAL DATA

Connection in acc. with standard EN-VDE	
Nominal Current I_N	12A
Nominal Cross Section	-
Maximum load current	12A
Insulating Material	PA
Inflammability class acc. to UL94	V0
Nominal voltage, UL/CUL	300V
Nominal current, UL/CUL	12A

