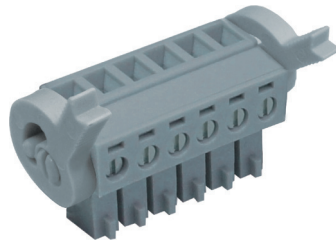
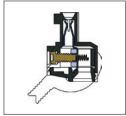


MC422 Pluggable PCB Connector, Plug



DIMENSIONS/POSITIONS

MC422-381

Pitch	3.81mm
Poles	2 ~ 24Poles
Dimension A	3.81mm
Length	A= 3.81xP+7.20mm(P≥2)
Housing Material	PA 66
Cage Clamp	Brass, Ni Plated
Contact	Phosphor Bronze, Tin Plated
Screw Thread	M2.0, Steel, Zinc Plated
Wire Size	16 ~ 26AWG
Tightening Torque, Max.	3.0 Lb-in
Operating Temperature	-40°C to +105°C

TECHNICAL DATA

Connection in acc. with standard EN-VDE	
Nominal Current I _N	8A
Nominal Cross Section	1.5mm ²
Maximum load current	8A
Insulating Material	PA
Inflammability class acc. to UL94	V0
Nominal voltage, UL/CUL	300V
Nominal current, UL/CUL	10A

