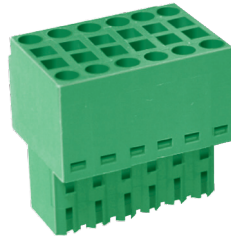
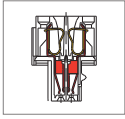


MC600 Pluggable PCB Connector, Plug



DIMENSIONS/POSITIONS

MC600-350

Pitch	3.50mm
Poles	2 ~ 40Poles
Dimension A	3.50mm
Length	A = 3.50xP (P ≥ 4)
Housing Material	PA 66
Spring	Stainless Strip Steel
Contact	Phosphor Bronze, Tin Plated
Wire Size	18 ~ 22AWG
Operating Temperature	-40°C to +105°C

TECHNICAL DATA

Connection in acc. with standard EN-VDE	
Nominal Current I _N	5A
Nominal Cross Section	0.75mm ²
Maximum load current	5A
Insulating Material	PA
Inflammability class acc. to UL94	V0
Nominal voltage, UL/CUL	150V
Nominal current, UL/CUL	5A

