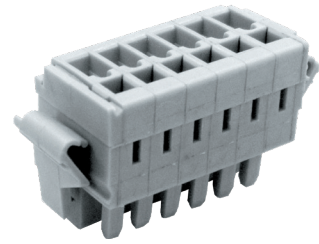
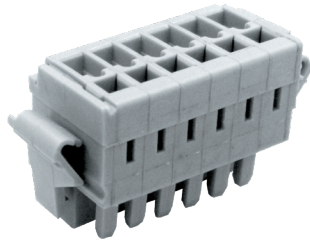
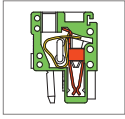


MC705 Pluggable PCB Connector, Plug



DIMENSIONS/POSITIONS

	MC705-350..D	MC705-381..D
Pitch	3.50mm	3.81mm
Poles	2 ~ 26Poles	2 ~ 26Poles
Dimension A	3.50mm	3.81mm
Length	A= 3.50xP+12.00mm(P≥2)	A= 3.81xP+12.00mm(P≥2)
Housing Material	PA 66	PA 66
Spring	Stainless Strip Steel	Stainless Strip Steel
Contact	Phosphor Bronze, Tin Plated	Phosphor Bronze, Tin Plated
Wire Size	14 ~ 28AWG	14 ~ 28AWG
Operating Temperature	-40°C to +105°C	-40°C to +105°C

TECHNICAL DATA

Connection in acc. with standard EN-VDE		
Nominal Current I _N	10A	10A
Nominal Cross Section	1.5mm ²	1.5mm ²
Maximum load current	10A	10A
Insulating Material	PA	PA
Inflammability class acc. to UL94	V0	V0
Nominal voltage, UL/CUL	300V	300V
Nominal current, UL/CUL	10A	10A

