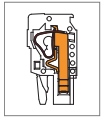
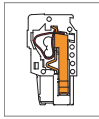


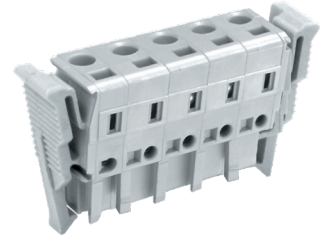
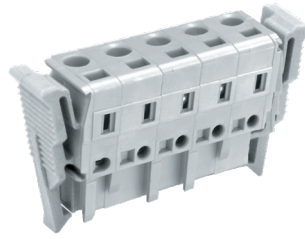
MC705 Pluggable PCB Connector, Plug



MC705-750..A



MC705-750..B



DIMENSIONS/POSITIONS

| | MC705-750..A | MC705-750..B |
|-----------------------|-----------------------------|-----------------------------|
| Pitch | 7.50mm | 7.50mm |
| Poles | 2 ~ 24Poles | 2 ~ 24Poles |
| Dimension A | 7.50mm | 7.50mm |
| Length | A= 7.50xP+15.00mm(P≥2) | A= 7.50xP+15.00mm(P≥2) |
| Housing Material | PA 66 | PA 66 |
| Spring | Stainless Strip Steel | Stainless Strip Steel |
| Contact | Phosphor Bronze, Tin Plated | Phosphor Bronze, Tin Plated |
| Wire Size | 12 ~ 28AWG | 12 ~ 28AWG |
| Operating Temperature | -40°C to +105°C | -40°C to +105°C |

TECHNICAL DATA

| | | |
|---|--------------------|--------------------|
| Connection in acc. with standard EN-VDE | | |
| Nominal Current I _n | 16A | 16A |
| Nominal Cross Section | 2.5mm ² | 2.5mm ² |
| Maximum load current | 16A | 16A |
| Insulating Material | PA | PA |
| Inflammability class acc. to UL94 | V0 | V0 |
| Nominal voltage, UL/CUL | 300V | 300V |
| Nominal current, UL/CUL | 16A | 16A |

