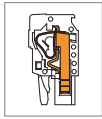
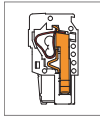


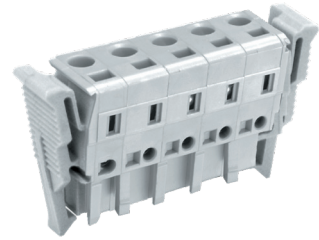
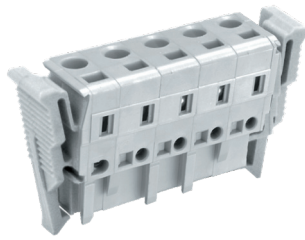
MC705 Pluggable PCB Connector, Plug



MC705-762..A



MC705-762..B



DIMENSIONS/POSITIONS

	MC705-762..A	MC705-762..B
Pitch	7.62mm	7.62mm
Poles	2 ~ 24Poles	2 ~ 24Poles
Dimension A	7.62mm	7.62mm
Length	A= 7.62xP+14.96mm(P≥2)	A= 7.62xP+14.96mm(P≥2)
Housing Material	PA 66	PA 66
Spring	Stainless Strip Steel	Stainless Strip Steel
Contact	Phosphor Bronze, Tin Plated	Phosphor Bronze, Tin Plated
Wire Size	12A ~ 28WG	12 ~ 28AWG
Operating Temperature	-40°C to +105°C	-40°C to +105°C

TECHNICAL DATA

Connection in acc. with standard EN-VDE		
Nominal Current I _N	16A	16A
Nominal Cross Section	2.5mm ²	2.5mm ²
Maximum load current	16A	16A
Insulating Material	PA	PA
Inflammability class acc. to UL94	V0	V0
Nominal voltage, UL/CUL	300V	300V
Nominal current, UL/CUL	16A	16A

