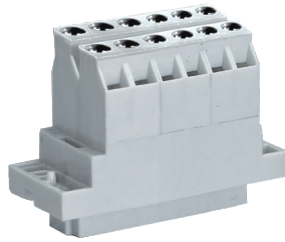
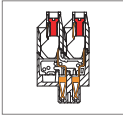


# MCLM020 Pluggable PCB Connector, Plug



**DIMENSIONS/POSITIONS**

**MCLM020-508**

Pitch	5.08mm
Poles	32Poles
Dimension A	5.08mm
Length	A= 5.08xP+13.72mm(P≥4)
Housing Material	PA 66
Cage Clamp	Brass, Ni Plated
Contact	Phosphor Bronze, Tin Plated
Screw Thread	M3.0, Steel, Zinc Plated
Wire Size	14 ~ 22AWG
Tightening Torque, Max.	5.22 Lb-in
Operating Temperature	-40°C to +105°C

**TECHNICAL DATA**

Connection in acc. with standard EN-VDE	
Nominal Current I <sub>N</sub>	5A
Nominal Cross Section	1.5mm <sup>2</sup>
Maximum load current	5A
Insulating Material	PA
Inflammability class acc. to UL94	V0
Nominal voltage, CSA/CSAUS	300V
Nominal current, CSA/CSAUS	5A

