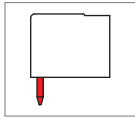
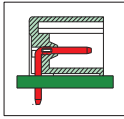


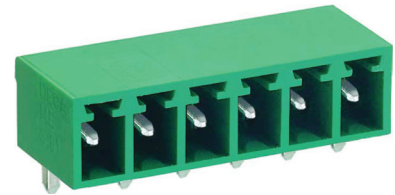
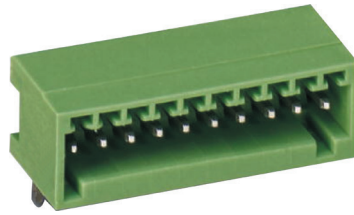
ME030 PCB Connector, Header



ME030-250



ME030-350



DIMENSIONS/POSITIONS

	ME030-250	ME030-350
Pitch	2.50mm	3.50mm
Poles	2 ~ 24Poles	2 ~ 24Poles
Dimension A	2.50mm	3.50mm
Length	$A = 2.50 \times P + 1.90 \text{mm} (P \geq 4)$	$A = 3.50 \times P + 0.6 \text{mm} (P \geq 2)$
Housing Material	PA 66	PA 66
Pin Dimensions	Brass, Tin Plated	Brass, Tin Plated
PCB Hole Diameter	1.2mm	1.3mm
Operating Temperature	-40°C to +105°C	-40°C to +105°C

TECHNICAL DATA

Connection in acc. with standard EN-VDE		
Nominal Current I_N	4A	8A
Nominal Cross Section	-	-
Maximum load current	4A	8A
Insulating Material	PA	PA
Inflammability class acc. to UL94	V0	V0
Nominal voltage, UL/CUL	125V	300V
Nominal current, UL/CUL	4A	10A

