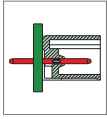
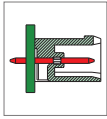


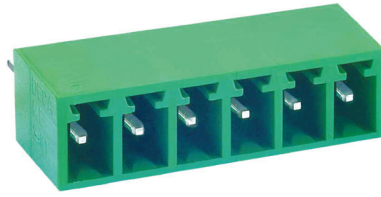
ME040 PCB Connector, Header



ME040-381



ME040-500



DIMENSIONS/POSITIONS

	ME040-381	ME040-500
Pitch	3.81mm	5.00mm
Poles	2 ~ 24Poles	2 ~ 24Poles
Dimension A	3.81mm	5.00mm
Length	$A = 3.81 \times P + 0.60 \text{mm} (P \geq 2)$	$A = 5.00 \times P + 1.60 \text{mm} (P \geq 2)$
Housing Material	PA 66	PA 66
Pin Dimensions	Brass, Tin Plated	Brass, Tin Plated
PCB Hole Diameter	1.3mm	1.5mm
Operating Temperature	-40°C to +105°C	-40°C to +105°C

TECHNICAL DATA

Connection in acc. with standard EN-VDE		
Nominal Current I_N	8A	16A
Nominal Cross Section	-	-
Maximum load current	8A	16A
Insulating Material	PA	PA
Inflammability class acc. to UL94	V0	V0
Nominal voltage, UL/CUL	300V	300V
Nominal current, UL/CUL	10A	16A

