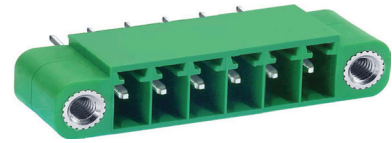
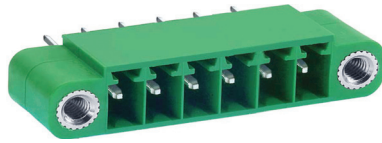
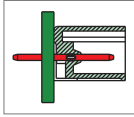


# ME060 Male Connector with Soldering Pin



## DIMENSIONS/POSITIONS

	ME060-350	ME060-381
Pitch	3.50mm	3.81mm
Poles	2 ~ 24Poles	2 ~ 24Poles
Dimension A	3.50mm	3.81mm
Length	A= 3.50xP+10.40mm(P≥2)	A= 3.81xP+10.40mm(P≥2)
Housing Material	PA 66	PA 66
Pin Dimensions	Brass, Tin Plated	Brass, Tin Plated
PCB Hole Diameter	1.3mm	1.3mm
Operating Temperature	-40°C to +105°C	-40°C to +105°C

## TECHNICAL DATA

Connection in acc. with standard EN-VDE		
Nominal Current I <sub>N</sub>	8A	8A
Nominal Cross Section	-	-
Maximum load current	8A	8A
Insulating Material	PA	PA
Inflammability class acc. to UL94	V0	V0
Nominal voltage, UL/CUL	300V	300V
Nominal current, UL/CUL	10A	10A

