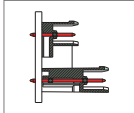


# ME14L Male Connector, Double Level Header-Modular



## DIMENSIONS/POSITIONS

|                       | ME14L-500M              | ME14L-508M              |
|-----------------------|-------------------------|-------------------------|
| Pitch                 | 5.00mm                  | 5.08mm                  |
| Poles                 | 4 ~ 6Poles              | 4 ~ 6Poles              |
| Dimension A           | 5.00mm                  | 5.08mm                  |
| Length                | A= 5.00xP/2+3.50mm(P≥4) | A= 5.08xP/2+3.54mm(P≥2) |
| Housing Material      | PA 66                   | PA 66                   |
| Pin Dimensions        | Brass, Tin Plated       | Brass, Tin Plated       |
| PCB Hole Diameter     | 1.5mm                   | 1.5mm                   |
| Operating Temperature | -40°C to +105°C         | -40°C to +105°C         |

## TECHNICAL DATA

|   |      |      |
|---|------|------|
| Connection in acc. with standard EN-VDE |      |      |
| Nominal Current I <sub>N</sub>          | 16A  | 16A  |
| Nominal Cross Section                   | -    | -    |
| Maximum load current                    | 16A  | 16A  |
| Insulating Material                     | PA   | PA   |
| Inflammability class acc. to UL94       | V0   | V0   |
| Nominal voltage, UL/CUL                 | 300V | 300V |
| Nominal current, UL/CUL                 | 16A  | 16A  |

