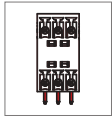
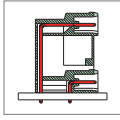


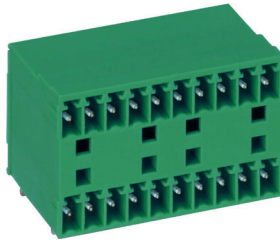
ME230 Male Connector, Double Level Header



ME230-350



ME230-500

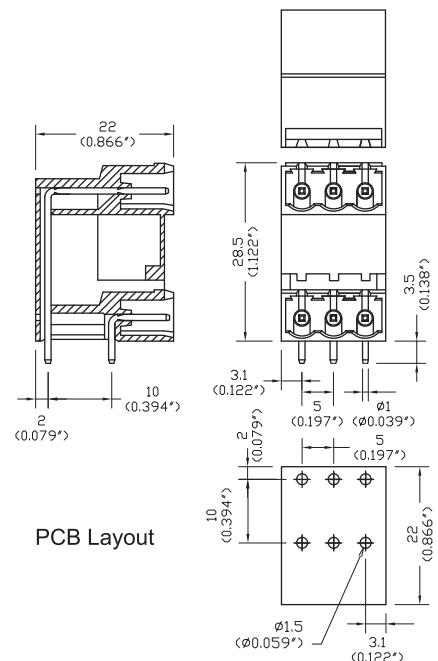
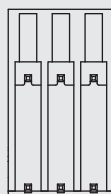
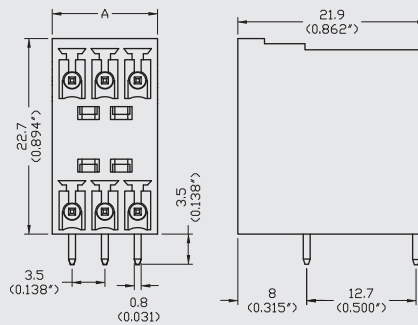


DIMENSIONS/POSITIONS

| | ME230-350 | ME230-500 |
|-----------------------|---|---|
| Pitch | 3.50mm | 5.00mm |
| Poles | 4 ~ 48Poles | 4 ~ 48Poles |
| Dimension A | 3.50mm | 5.00mm |
| Length | $A = 3.50 \times P / 2 + 0.80 \text{mm} (P \geq 4)$ | $A = 5.00 \times P / 2 + 1.20 \text{mm} (P \geq 4)$ |
| Housing Material | PA 66 | PA 66 |
| Pin Dimensions | Brass, Tin Plated | Brass, Tin Plated |
| PCB Hole Diameter | 1.3mm | 1.5mm |
| Operating Temperature | -40°C to +105°C | -40°C to +105°C |

TECHNICAL DATA

| | | |
|---|------|------|
| Connection in acc. with standard EN-VDE | | |
| Nominal Current I_N | 10A | 12A |
| Nominal Cross Section | - | - |
| Maximum load current | 10A | 12A |
| Insulating Material | PA | PA |
| Inflammability class acc. to UL94 | V0 | V0 |
| Nominal voltage, UL/CUL | 300V | 300V |
| Nominal current, UL/CUL | 10A | 16A |



PCB Layout