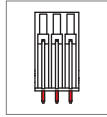
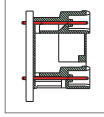


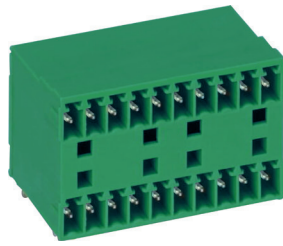
ME240 Male Connector, Double Level Header



ME240-350



ME240-500



DIMENSIONS/POSITIONS

	ME240-350	ME240-500
Pitch	3.50mm	5.00mm
Poles	4 ~ 48Poles	4 ~ 48Poles
Dimension A	3.50mm	5.00mm
Length	$A = 3.50 \times P/2 + 1.40 \text{mm} (P \geq 4)$	$A = 5.00 \times P/2 + 1.20 \text{mm} (P \geq 4)$
Housing Material	PA 66	PA 66
Pin Dimensions	Brass, Tin Plated	Brass, Tin Plated
PCB Hole Diameter	1.3mm	1.5mm
Operating Temperature	-40°C to +105°C	-40°C to +105°C

TECHNICAL DATA

Connection in acc. with standard EN-VDE		
Nominal Current I_N	10A	12A
Nominal Cross Section	-	-
Maximum load current	10A	12A
Insulating Material	PA	PA
Inflammability class acc. to UL94	V0	V0
Nominal voltage, UL/CUL	300V	300V
Nominal current, UL/CUL	10A	16A

