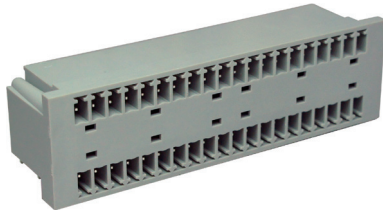
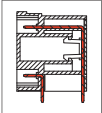


ME257 Male Connector, Double Level Header



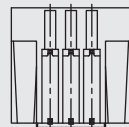
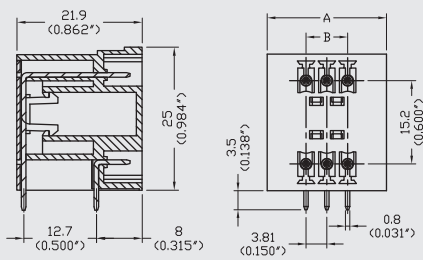
DIMENSIONS/POSITIONS

ME257-381

Pitch	3.81mm
Poles	4 ~ 40Poles
Dimension A	3.81mm
Length	$A = 3.81XP/2 + 10.40\text{mm} (P \geq 2)$
Housing Material	PBT
pin Dimensions	Brass, Tin Plated
PCB Hole Diameter	1.3mm
Operating Temperature	-40°C to +120°C

TECHNICAL DATA

Connection in acc. with standard EN-VDE	
Nominal Current I_N	10A
Nominal Cross Section	-
Maximum load current	10A
Insulating Material	PBT
Inflammability class acc. to UL94	V0
Nominal voltage, UL/CUL	300V
Nominal current, UL/CUL	10A



PCB Layout

