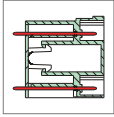
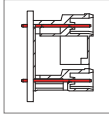


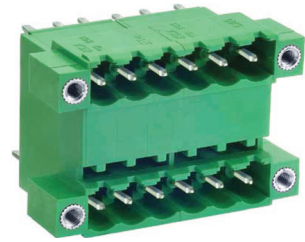
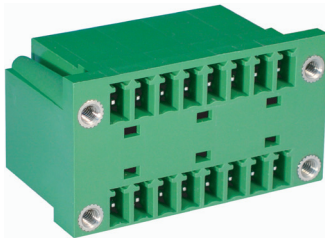
# ME260 Male Connector, Double Level Header with Flanges



ME260-381



ME260-500



## DIMENSIONS/POSITIONS

	ME260-381	ME260-500
Pitch	3.81mm	5.00mm
Poles	4 ~ 32Poles	4 ~ 48Poles
Dimension A	3.81mm	5.00mm
Length	$A = 3.81 \times P/2 + 10.40\text{mm} (P \geq 4)$	$A = 5.00 \times P + 10.00\text{mm} (P \geq 4)$
Housing Material	PBT	PA 66
Pin Dimensions	Brass, Tin Plated	Brass, Tin Plated
PCB Hole Diameter	1.3mm	1.5mm
Operating Temperature	-40°C to +120°C	-40°C to +105°C

## TECHNICAL DATA

Connection in acc. with standard EN-VDE		
Nominal Current $I_N$	10A	12A
Nominal Cross Section	-	-
Maximum load current	10A	12A
Insulating Material	PA	PA
Inflammability class acc. to UL94	V0	V0
Nominal voltage, UL/CUL	300V	300V
Nominal current, UL/CUL	10A	16A

