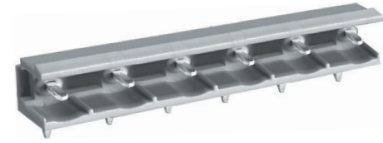
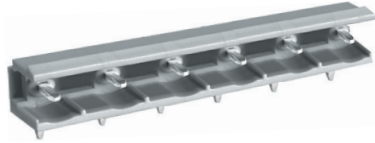
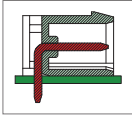


ME710 Connector, Header with Soldering Pin



DIMENSIONS/POSITIONS

| | ME710-750 | ME710-762 |
|-----------------------|-----------------------------|-----------------------------|
| Pitch | 7.50mm | 7.62mm |
| Poles | 2 ~ 24Poles | 2 ~ 24Poles |
| Dimension a | 7.50mm | 7.62mm |
| Length | A= 7.50xP-1.00mm(P≥2) | A= 7.62xP-1.04mm(P≥2) |
| Housing Material | PA 66 | PA 66 |
| Pin Dimensions | Phosphor Bronze, Tin Plated | Phosphor Bronze, Tin Plated |
| PCB Hole Diameter | 1.7mm | 1.7mm |
| Operating Temperature | -40°C to +105°C | -40°C to +105°C |

TECHNICAL DATA

| | | |
|---|------|------|
| Connection in acc. with standard EN-VDE | | |
| Nominal Current I _N | 16A | 16A |
| Nominal Cross Section | - | - |
| Maximum load current | 16A | 16A |
| Insulating Material | PA | PA |
| Inflammability class acc. to UL94 | V0 | V0 |
| Nominal voltage, UL/CUL | 300V | 300V |
| Nominal current, UL/CUL | 16A | 16A |

