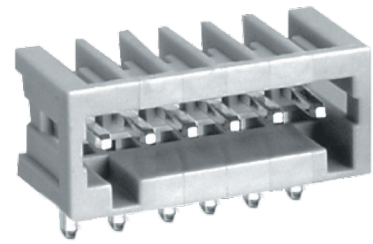
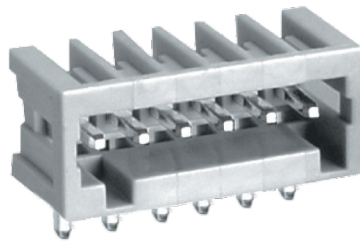
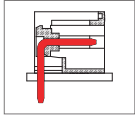


ME730 Connector, Header with Soldering Pin



DIMENSIONS/POSITIONS

	ME730-250	ME730-254
Pitch	2.50mm	2.54mm
Poles	2 ~ 24Poles	2 ~ 24Poles
Dimension A	2.50mm	2.54mm
Length	$A = 2.50 \times P + 2.50 \text{mm} (P \geq 2)$	$A = 2.54 \times P + 2.46 \text{mm} (P \geq 2)$
Housing Material	PA 66	PA 66
Pin Dimensions	Brass, Tin Plated	Brass, Tin Plated
PCB Hole Diameter	1.4mm	1.4mm
Operating Temperature	-40°C to +105°C	-40°C to +105°C

TECHNICAL DATA

Connection in acc. with standard EN-VDE		
Nominal Current I_N	4A	4A
Nominal Cross Section	-	-
Maximum load current	4A	4A
Insulating Material	PA	PA
Inflammability class acc. to UL94	V0	V0
Nominal voltage, UL/CUL	150V	150V
Nominal current, UL/CUL	4A	4A

