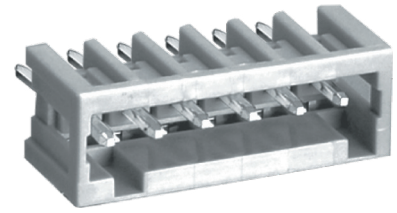
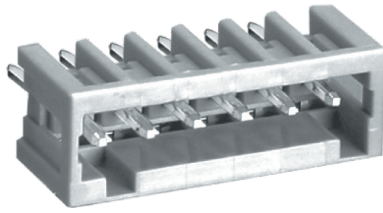
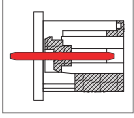


ME740 Connector, Header with Soldering Pin



DIMENSIONS/POSITIONS

	ME740-350	ME740-381
Pitch	3.50mm	3.81mm
Poles	2 ~ 26Poles	2 ~ 26Poles
Dimension A	3.50mm	3.81mm
Length	$A = 3.50 \times P + 2.45 \text{mm} (P \geq 2)$	$A = 3.81 \times P + 2.11 \text{mm} (P \geq 2)$
Housing Material	PA 66	PA 66
Pin Dimensions	Brass, Tin Plated	Brass, Tin Plated
PCB Hole Diameter	1.7mm	1.7mm
Operating Temperature	-40°C to +105°C	-40°C to +105°C

TECHNICAL DATA

Connection in acc. with standard EN-VDE		
Nominal Current I_N	10A	10A
Nominal Cross Section	-	-
Maximum load current	10A	10A
Insulating Material	PA	PA
Inflammability class acc. to UL94	V0	V0
Nominal voltage, UL/CUL	300V	300V
Nominal current, UL/CUL	10A	10A

