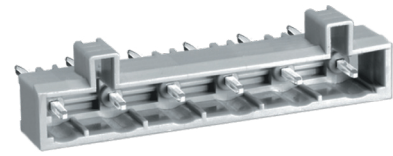
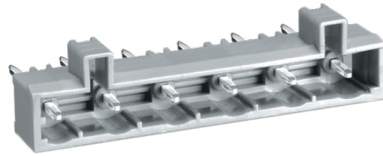
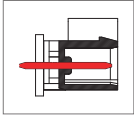


ME745 Connector, Header with Soldering Pin



DIMENSIONS/POSITIONS

	ME745-750	ME745-762
Pitch	7.50mm	7.62mm
Poles	2 ~ 24Poles	2 ~ 24Poles
Dimension A	7.50mm	7.62mm
Length	$A = 7.50 \times P + 0.90 \text{mm} (P \geq 2)$	$A = 7.62 \times P + 0.38 \text{mm} (P \geq 2)$
Housing Material	PA 66	PA 66
Pin Dimensions	Phosphor Bronze, Tin Plated	Phosphor Bronze, Tin Plated
PCB Hole Diameter	1.7mm	1.7mm
Operating Temperature	-40°C to +105°C	-40°C to +105°C

TECHNICAL DATA

Connection in acc. with standard EN-VDE		
Nominal Current I_N	16A	16A
Nominal Cross Section	-	-
Maximum load current	16A	16A
Insulating Material	PA	PA
Inflammability class acc. to UL94	V0	V0
Nominal voltage, UL/CUL	300V	300V
Nominal current, UL/CUL	16A	16A

