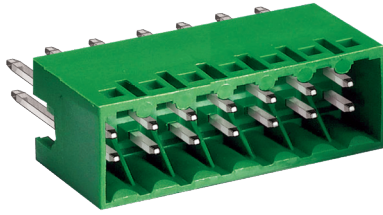
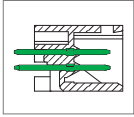


ME940 Connector, Double Level Header



DIMENSIONS/POSITIONS

ME940-350

Pitch	3.50mm
Poles	2 ~ 40Poles
Dimension A	3.50mm
Length	A= 3.50xP/2+1.00mm(P≥4)
Housing Material	PA 66
Pin Dimensions	Brass, Tin Plated
PCB Hole Diameter	1.3mm
Operating Temperature	-40°C to +105°C

TECHNICAL DATA

Connection in acc. with standard EN-VDE	
Nominal Current I _N	5A
Nominal Cross Section	-
Maximum load current	5A
Insulating Material	PA
Inflammability class acc. to UL94	V0
Nominal voltage, UL/CUL	150V
Nominal current, UL/CUL	5A

