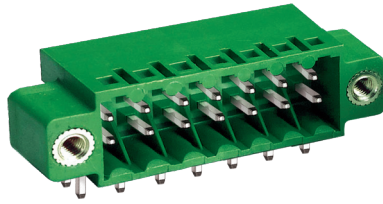
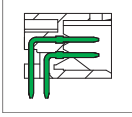


ME950 Connector, Double Level Header with Flanges



DIMENSIONS/POSITIONS

ME950-350

Pitch	3.50mm
Poles	2 ~ 40Poles
Dimension A	3.50mm
Length	$A = 3.50 \times P / 2 + 11.3 \text{mm} (P \geq 2)$
Housing Material	PA 66
Pin Dimensions	Phosphor Bronze, Tin Plated
PCB Hole Diameter	1.3mm
Operating Temperature	-40°C to +105°C

TECHNICAL DATA

Connection in acc. with standard EN-VDE	
Nominal Current I_N	5A
Nominal Cross Section	-
Maximum load current	5A
Insulating Material	PA
Inflammability class acc. to UL94	V0
Nominal voltage, UL/CUL	150V
Nominal current, UL/CUL	5A

