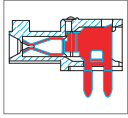
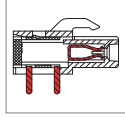


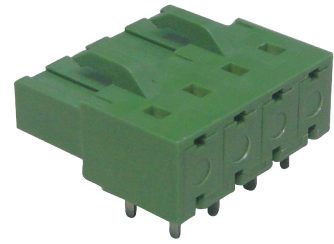
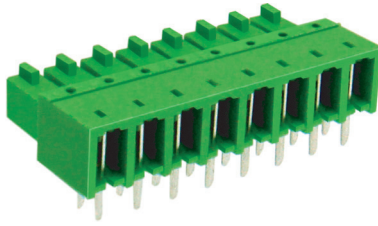
MF203 Connector



ME203-381



ME203-508



DIMENSIONS/POSITIONS

	MF203-381	MF203-508
Pitch	3.81mm	5.08mm
Poles	2 ~ 24Poles	2 ~ 24Poles
Dimension A	3.81mm	5.08mm
Length	$A=3.81 \times P+0.80\text{mm}(P \geq 2)$	$A=5.08 \times P+0.52\text{mm}(P \geq 2)$
Housing Material	PA 66	PA 66
Wire Protector	Phosphor Bronze, Tin Plated	Phosphor Bronze, Tin Plated
PCB Hole Diameter	1.6mm	1.4mm
Operating Temperature	-40°C to +105°C	-40°C to +105°C

TECHNICAL DATA

Connection in acc. with standard EN-VDE		
Nominal Current I_N	7A	11A
Nominal Cross Section	-	-
Maximum load current	7A	11A
Insulating Material	PA	PA
Inflammability class acc. to UL94	V0	V0
Nominal voltage, UL/CUL	300V	300V
Nominal current, UL/CUL	7A	11A

