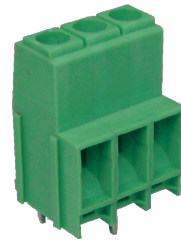
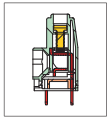


MH140 PCB Terminal Block, High Power- Modular



DIMENSIONS/POSITIONS

	MH140-635	MH140-635M
Pitch	6.35mm	6.35mm
Poles	2 ~ 8Poles	2 ~ 30Poles
Dimension A	6.35mm	6.35mm
Length	A= 6.35xP(P≥2)	A= 6.35xP(P≥2)
Housing Material	PA 66	PA 66
Cage Clamp	Steel, Zinc Plated	Steel, Zinc Plated
Contact	Copper, Tin Plated	Brass, Tin Plated
Screw Thread	M3, Steel, Zinc Plated	M3, Steel, Zinc Plated
Wire Size	8 ~ 18AWG	8 ~ 18AWG
PCB Hole Diameter	1.6mm	1.6mm
Tightening Torque, Max.	9.0 Lb-in	9.0 Lb-in
Operating Temperature	-40°C to +105°C	-40°C to +105°C

TECHNICAL DATA

Connection in acc. with standard EN-TUV		
Nominal Current I _N	57A	57A
Nominal Cross Section	10mm ²	10mm ²
Maximum load current	57A	57A
Insulating Material	PA	PA
Inflammability class acc. to UL94	V0	V0
Nominal voltage, UL/CUL	600V	600V
Nominal current, UL/CUL	35A	35A

