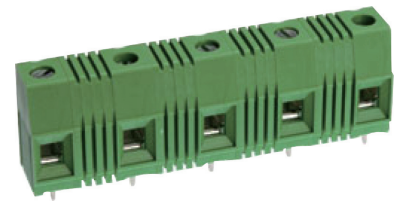
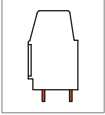


# MH170 PCB Terminal Block, Modular

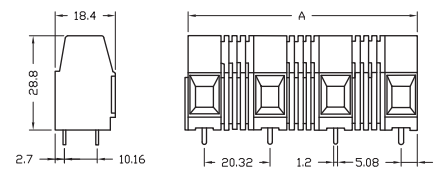
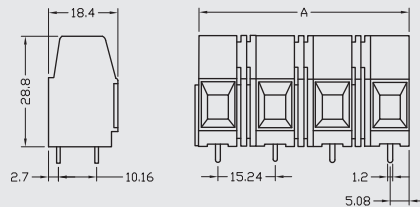


## DIMENSIONS/POSITIONS

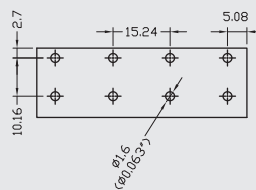
	MH170-152	MH170-203
Pitch	15.24mm	20.32mm
Poles	2Poles	2Poles
Dimension A	15.24mm	20.32mm
Length	A= 15.24xP(P=2)	A= 20.32xP(P=2)
Housing Material	PA 66	PA 66
Cage Clamp	Steel, Zinc Plated	Steel, Zinc Plated
Contact	Phosphor Bronze, Tin Plated	Phosphor Bronze, Tin Plated
Screw Thread	M4, Stainless Strip Steel	M4, Stainless Strip Steel
Wire Size	6 ~ 20AWG	6 ~ 20AWG
PCB Hole Diameter	1.6mm	1.6mm
Tightening Torque, Max.	15.58 Lb-in	15.58 Lb-in
Operating Temperature	-40°C to +105°C	-40°C to +105°C

## TECHNICAL DATA

Connection in acc. with standard EN-VDE		
Nominal Current I <sub>N</sub>	65A	65A
Nominal Cross Section	10mm <sup>2</sup>	10mm <sup>2</sup>
Maximum load current	65A	65A
Insulating Material	PA	PA
Inflammability class acc. to UL94	V0	V0
Nominal voltage, UL/CUL	1000V	1000V
Nominal current, UL/CUL	65A	65A



PCB Layout



PCB Layout

