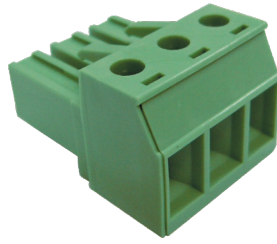
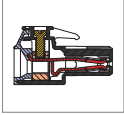


MPC100 PCB Connector



DIMENSIONS/POSITIONS

MPC100-762

Pitch	7.62mm
Poles	2 ~ 12Poles
Dimension A	7.62mm
Length	A= 7.62xP(P≥2)
Housing Material	PA 66
Contact	Copper Alloy, Tin Plated
Cage Clamp	Brass, Ni Plated
Wire Protector	Stainless Strip Steel
Screw Thread	Steel, Chrom Plated
Wire Size	10 ~ 24AWG
Tightening Torque, Max.	5.3 Lb-in
Operating Temperature	-40°C to +105°C

TECHNICAL DATA

Connection in acc. with standard EN-VDE	
Nominal Current I _N	30A
Nominal Cross Section	4.0mm ²
Maximum load current	30A
Insulating Material	PA
Inflammability class acc. to UL94	V0
Nominal voltage, UL/CUL	300V
Nominal current, UL/CUL	30A

