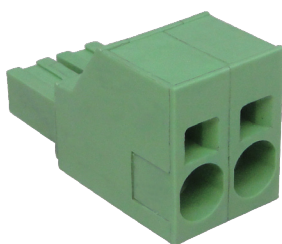
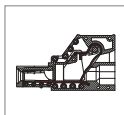


MPC200H PCB Connector



DIMENSIONS/POSITIONS

MPC200H-016

Pitch	10.16mm
Poles	2 ~ 8Poles
Dimension A	10.16mm
Length	A= 10.16xP(P≥2)
Housing Material	PA 66
Contact	Copper, Tin Plated
Cage Clamp	Brass, Ni Plated
Wire Protector	Stainless Strip Steel
Screw Thread	Steel, Zinc Plated
Wire Size	6 ~ 18AWG
Operating Temperature	-40°C to +105°C

TECHNICAL DATA

Connection in acc. with standard EN-VDE	
Nominal Current I_N	65A
Nominal Cross Section	-
Maximum load current	65A
Insulating Material	PA
Inflammability class acc. to UL94	V0
Nominal voltage, UL/CUL	600V
Nominal current, UL/CUL	65A

