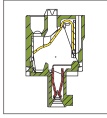
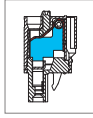


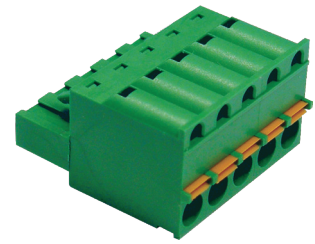
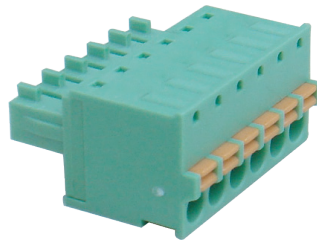
# MPC 300 PCB Connector



MPC300-381



MPC300-500



## DIMENSIONS/POSITIONS

	MPC300-381	MPC300-500
Pitch	3.81mm	5.00mm
Poles	2 ~ 20Poles	2 ~ 16Poles
Dimension A	3.81mm	5.00mm
Length	A= 3.81xP+0.8mm(P≥2)	A= 5.00xP(P≥2)
Housing Material	PA 66	PA 66
Contact	Phosphor Bronze, Tin Plated	Copper, Tin Plated
Wire Protector	Stainless Strip Steel	Stainless Strip Steel
Wire Size	16 ~ 28AWG	12 ~ 26AWG
Operating Temperature	-40°C to +105°C	-40°C to +105°C

## TECHNICAL DATA

Connection in acc. with standard EN-VDE		
Nominal Current I <sub>N</sub>	8A	16A
Nominal Cross Section	-	2.5mm <sup>2</sup>
Maximum load current	8A	16A
Insulating Material	PA	PA
Inflammability class acc. to UL94	V0	V0
Nominal voltage, UL/CUL	300V	300V
Nominal current, UL/CUL	8A	16A

