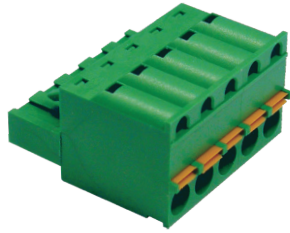
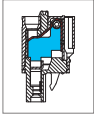


MPC300 PCB Connector



DIMENSIONS/POSITIONS

MPC300-508

Pitch	5.08mm
Poles	2 ~ 16Poles
Dimension A	5.08mm
Length	A = 5.08xP (P ≥ 2)
Housing Material	PA 66
Contact	Copper, Tin Plated
Wire Protector	Stainless Strip Steel
Wire Size	12 ~ 26AWG
Operating Temperature	-40°C to +105°C

TECHNICAL DATA

Connection in acc. with standard EN-VDE	
Nominal Current I _N	16A
Nominal Cross Section	2.5mm ²
Maximum load current	16A
Insulating Material	PA
Inflammability class acc. to UL94	V0
Nominal voltage, UL/CUL	300V
Nominal current, UL/CUL	16A

