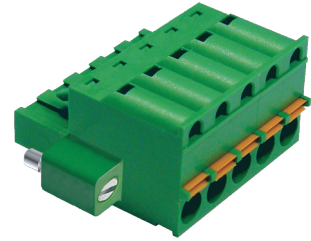
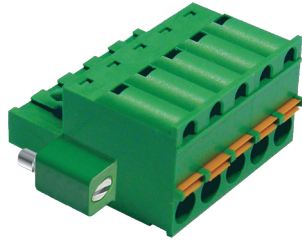
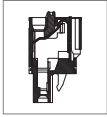


# MPC301 PCB Connector



## DIMENSIONS/POSITIONS

	MPC301-500	MPC301-508
Pitch	5.00mm	5.08mm
Poles	2 ~ 16Poles	2 ~ 16Poles
Dimension A	5.00mm	5.08mm
Length	A= 5.00xP+10.00mm(P≥2)	A= 5.08xP+9.46mm(P≥2)
Housing Material	PA 66	PA 66
Contact	Copper, Tin Plated	Copper, Tin Plated
Wire Protector	Stainless Strip Steel	Stainless Strip Steel
Wire Size	12 ~ 26AWG	12 ~ 26AWG
Operating Temperature	-40°C to +105°C	-40°C to +105°C

## TECHNICAL DATA

Connection in acc. with standard EN-VDE		
Nominal Current I <sub>N</sub>	16A	16A
Nominal Cross Section	2.5mm <sup>2</sup>	2.5mm <sup>2</sup>
Maximum load current	16A	16A
Insulating Material	PA	PA
Inflammability class acc. to UL94	V0	V0
Nominal voltage, UL/CUL	300V	300V
Nominal current, UL/CUL	16A	16A

