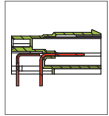
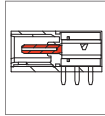


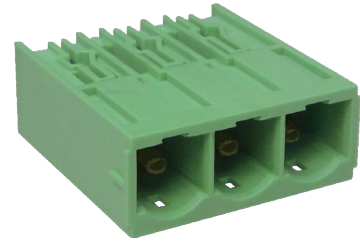
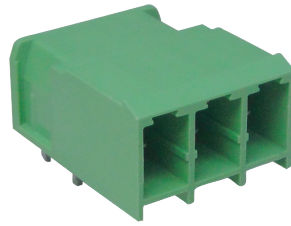
MPE100 PCB Connector, Header (wave soldering)



MPE100-762



MPE100-016



DIMENSIONS/POSITIONS

	MPE100-762	MPE100-016
Pitch	7.62mm	10.16mm
Poles	2 ~ 12Poles	2 ~ 8Poles
Dimension A	7.62mm	10.16mm
Length	A= 7.62xP(P≥2)	A= 10.16xP+13.20mm(P≥2)
Housing Material	PBT	PA 66
Contact	Copper, Tin plated	Copper alloy
PCB Hole Diameter	1.3mm	1.7mm
Operating Temperature	-40°C to +105°C	-40°C to +105°C

TECHNICAL DATA

Connection in acc. with standard EN-VDE		
Nominal Current I _N	30A	66A
Nominal Cross Section	-	-
Maximum load current	30A	66A
Insulating Material	PBT	PA
Inflammability class acc. to UL94	V0	V0
Nominal voltage, UL/CUL	300V	300V
Nominal current, UL/CUL	30A	66A

