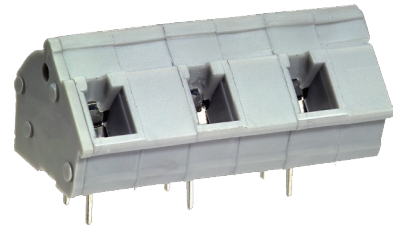
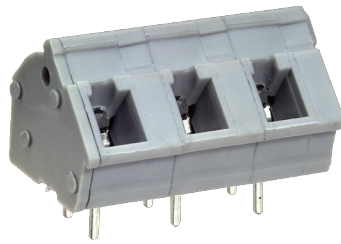
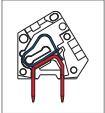


# MWX100 PCB Spring Type Terminal Block



## DIMENSIONS/POSITIONS

	MWX100-750	MWX100-100
Pitch	7.50mm	10.00mm
Poles	2 ~ 20Poles	2 ~ 20Poles
Dimension A	7.50mm	10.00mm
Length	A= 7.50xP+1.00mm(P≥2)	A= 10.00xP-4.00mm(P≥2)
Housing Material	PA 66	PA 66
Cover	PA 66	PA 66
Contact	Brass, Tin Plated	Brass, Tin Plated
Spring	Stainless Strip Steel	Stainless Strip Steel
Wire Size	14 ~ 28AWG	14 ~ 28AWG
PCB Hole Diameter	1.3mm	1.3mm
Operating Temperature	-40°C to +105°C	-40°C to +105°C

## TECHNICAL DATA

Connection in acc. with standard EN-VDE		
Nominal Current I <sub>N</sub>	16A	16A
Nominal Cross Section	-	-
Maximum load current	16A	16A
Insulating Material	PA	PA
Inflammability class acc. to UL94	V0	V0
Nominal voltage, UL/CUL	300V	300V
Nominal current, UL/CUL	16A	16A

