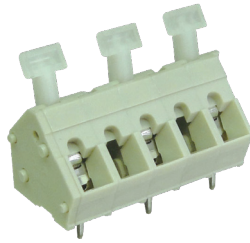
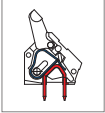


MWX101 PCB Spring Type Terminal Block



DIMENSIONS/POSITIONS

MWX101-016

Pitch	10.16mm
Poles	2 ~ 20Poles
Dimension A	10.16mm
Length	A= 10.16xP-4.08mm(P≥2)
Housing Material	PA 66
Cover	PA 66
Contact	Brass, Tin Plated
Spring	Stainless Strip Steel
Wire Size	14 ~ 28AWG
PCB Hole Diameter	1.3mm
Operating Temperature	-40°C to +105°C

TECHNICAL DATA

Connection in acc. with standard EN-VDE	
Nominal Current I _N	16A
Nominal Cross Section	-
Maximum load current	16A
Insulating Material	PA
Inflammability class acc. to UL94	V0
Nominal voltage, UL/CUL	300V
Nominal current, UL/CUL	16A

