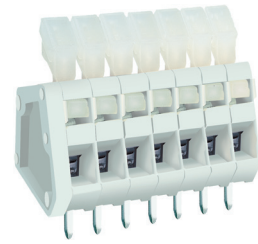
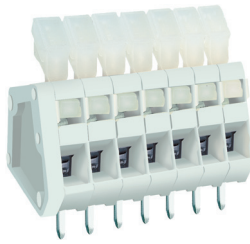
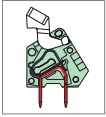


MWX101 PCB Spring Type Terminal Block



DIMENSIONS/POSITIONS

	MWX101-250	MWX101-254
Pitch	2.50mm	2.54mm
Poles	2 ~ 24Poles	2 ~ 24Poles
Dimension A	2.50mm	2.54mm
Length	A = 2.50xP+1.50mm(P≥2)	A = 2.54xP+1.50mm(P≥2)
Housing Material	PA 66	PA 66
Cover	PA 66	PA 66
Contact	Brass, Tin Plated	Brass, Tin Plated
Spring	Stainless Strip Steel	Stainless Strip Steel
Wire Size	20 ~ 28AWG	20 ~ 28AWG
PCB Hole Diameter	1.3mm	1.3mm
Operating Temperature	-40°C to +105°C	-40°C to +105°C

TECHNICAL DATA

Connection in acc. with standard EN-VDE		
Nominal Current I _N	6A	6A
Nominal Cross Section	0.5mm ²	0.5mm ²
Maximum load current	6A	6A
Insulating Material	PA	PA
Inflammability class acc. to UL94	V0	V0
Nominal voltage, UL/CUL	150V	150V
Nominal current, UL/CUL	4A	4A

