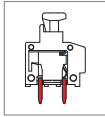
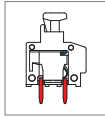


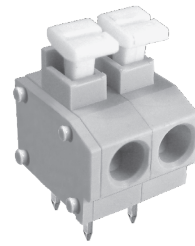
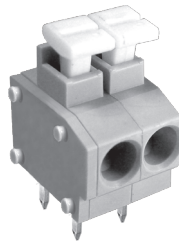
# MWX211 PCB Spring Type Terminal Block



MWX211-381



MWX211-500

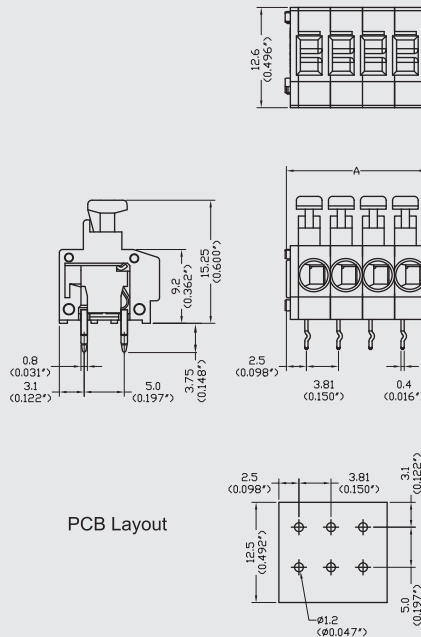


## DIMENSIONS/POSITIONS

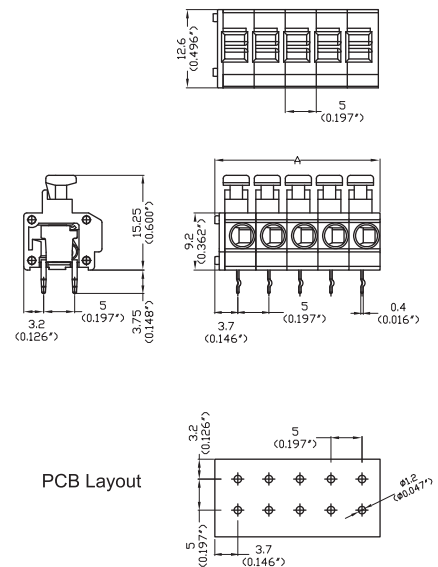
	MWX211-381	MWX211-500
Pitch	3.81mm	5.00mm
Poles	2 ~ 24Poles	2 ~ 24Poles
Dimension A	3.81mm	5.00mm
Length	$A = 3.81 \times P + 1.50 \text{mm} (P \geq 2)$	$A = 5.00 \times P + 1.50 \text{mm} (P \geq 2)$
Housing Material	PA 66	PA 66
Cover	PA 66	PA 66
Contact	Brass, Tin Plated	Brass, Tin Plated
Spring	Stainless Strip Steel	Stainless Strip Steel
Wire Size	16 ~ 20AWG	14 ~ 20AWG
PCB Hole Diameter	1.2mm	1.2mm
Operating Temperature	-40°C to +105°C	-40°C to +105°C

## TECHNICAL DATA

Connection in acc. with standard EN-VDE		
Nominal Current $I_N$	8A	10A
Nominal Cross Section	-	-
Maximum load current	8A	10A
Insulating Material	PA	PA
Inflammability class acc. to UL94	V0	V0
Nominal voltage, UL/CUL	300V	300V
Nominal current, UL/CUL	8A	10A



PCB Layout



PCB Layout