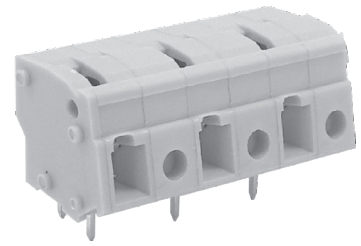
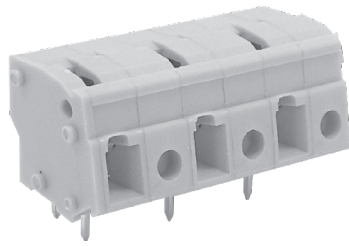
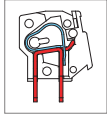


MWX300 PCB Spring Type Terminal Block



DIMENSIONS/POSITIONS

	MWX300-100	MWX300-016
Pitch	10.00mm	10.16mm
Poles	2 ~ 24Poles	2 ~ 24Poles
Dimension A	10.00mm	10.16mm
Length	A=10.00xP+2.90mm(P≥2)	A=10.16xP+2.90mm(P≥2)
Housing Material	PA 66	PA 66
Cover	PA 66	PA 66
Contact	Brass, Tin Plated	Brass, Tin Plated
Spring	Stainless Strip Steel	Stainless Strip Steel
Wire Size	12 ~ 28AWG	12 ~ 28AWG
PCB Hole Diameter	1.1mm	1.1mm
Operating Temperature	-40°C to +105°C	-40°C to +105°C

TECHNICAL DATA

Connection in acc. with standard EN-VDE		
Nominal Current I _N	20A	20A
Nominal Cross Section	4.0mm ²	4.0mm ²
Maximum load current	20A	20A
Insulating Material	PA	PA
Inflammability class acc. to UL94	V0	V0
Nominal voltage, UL/CUL	300V	300V
Nominal current, UL/CUL	20A	20A

