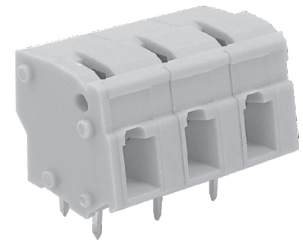
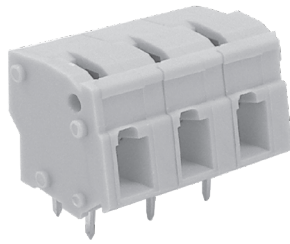
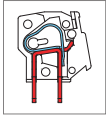


# MWX300 PCB Spring Type Terminal Block



## DIMENSIONS/POSITIONS

	MWX300-750	MWX300-762
Pitch	7.50mm	7.62mm
Poles	2 ~ 24Poles	2 ~ 24Poles
Dimension A	7.50mm	7.62mm
Length	A= 7.50xP+2.90mm(P≥2)	A= 7.62xP+2.90mm(P≥2)
Housing Material	PA 66	PA 66
Cover	PA 66	PA 66
Contact	Brass, Tin Plated	Brass, Tin Plated
Spring	Stainless Strip Steel	Stainless Strip Steel
Wire Size	12 ~ 28AWG	12 ~ 28AWG
PCB Hole Diameter	1.1mm	1.1mm
Operating Temperature	-40°C to +105°C	-40°C to +105°C

## TECHNICAL DATA

Connection in acc. with standard EN-VDE		
Nominal Current I <sub>N</sub>	20A	20A
Nominal Cross Section	4.0mm <sup>2</sup>	4.0mm <sup>2</sup>
Maximum load current	20A	20A
Insulating Material	PA	PA
Inflammability class acc. to UL94	V0	V0
Nominal voltage, UL/CUL	300V	300V
Nominal current, UL/CUL	20A	20A

