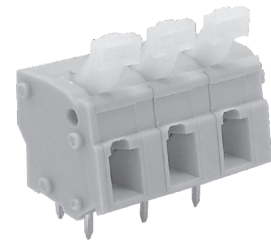
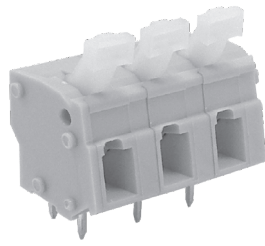
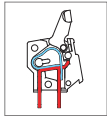


# MWX301 PCB Spring Type Terminal Block



## DIMENSIONS/POSITIONS

|                       | MWX301-750            | MWX301-762            |
|-----------------------|-----------------------|-----------------------|
| Pitch                 | 7.50mm                | 7.62mm                |
| Poles                 | 2 ~ 24Poles           | 2 ~ 24Poles           |
| Dimension A           | 7.50mm                | 7.62mm                |
| Length                | A= 7.50xP+2.90mm(P≥2) | A= 7.62xP+2.90mm(P≥2) |
| Housing Material      | PA 66                 | PA 66                 |
| Cover                 | PA 66                 | PA 66                 |
| Contact               | Brass, Tin Plated     | Brass, Tin Plated     |
| Spring                | Stainless Strip Steel | Stainless Strip Steel |
| Wire Size             | 12 ~ 28AWG            | 12 ~ 28AWG            |
| PCB Hole Diameter     | 1.1mm                 | 1.1mm                 |
| Operating Temperature | -40°C to +105°C       | -40°C to +105°C       |

## TECHNICAL DATA

|   |                    |                    |
|---|--------------------|--------------------|
| Connection in acc. with standard EN-VDE |                    |                    |
| Nominal Current I <sub>N</sub>          | 20A                | 20A                |
| Nominal Cross Section                   | 4.0mm <sup>2</sup> | 4.0mm <sup>2</sup> |
| Maximum load current                    | 20A                | 20A                |
| Insulating Material                     | PA                 | PA                 |
| Inflammability class acc. to UL94       | V0                 | V0                 |
| Nominal voltage, UL/CUL                 | 300V               | 300V               |
| Nominal current, UL/CUL                 | 20A                | 20A                |

