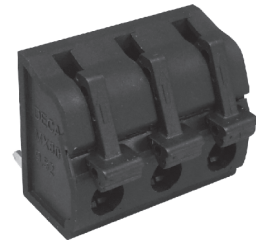
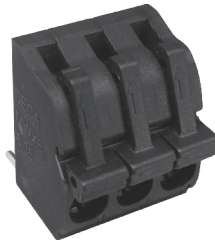
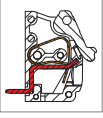


# MWX804 PCB Spring Type Terminal Block



### DIMENSIONS/POSITIONS

	MWX804-635M	MWX804-952M
Pitch	6.35mm	9.52mm
Poles	2 ~ 24Poles	2 ~ 24Poles
Dimension A	6.35mm	9.52mm
Length	A= 6.35xP(P≥2)	A= 9.52xP(P≥2)
Housing Material	PA 66	PA 66
Cover	PA 66	PA 66
Lever	PA 66	PA 66
Contact	Copper, Tin Plated	Copper, Tin Plated
Spring	Stainless Strip Steel	Stainless Strip Steel
Wire Size	10 ~ 20AWG	10 ~ 20AWG
PCB Hole Diameter	1.7mm	1.7mm
Operating Temperature	-40°C to +105°C	-40°C to +105°C

### TECHNICAL DATA

Connection in acc. with standard EN-VDE		
Nominal Current I <sub>N</sub>	25A	25A
Nominal Cross Section	-	-
Maximum load current	25A	25A
Insulating Material	PA	PA
Inflammability class acc. to UL94	V0	V0
Nominal voltage, UL/CUL	300V	300V
Nominal current, UL/CUL	25A	25A

