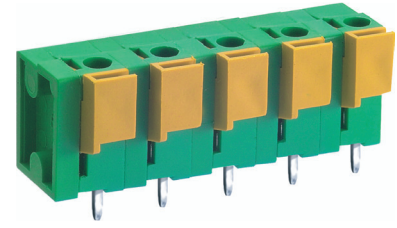
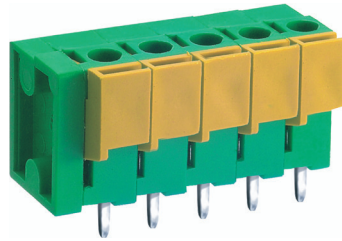
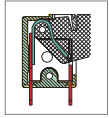


MX122 PCB Spring Type Terminal Block



DIMENSIONS/POSITIONS

	MX122-508	MX122-762
Pitch	5.08mm	7.62mm
Poles	2 ~ 24Poles	2 ~ 16Poles
Dimension A	5.08mm	7.62mm
Length	A= 5.08xP+2.54mm(P≥2)	A= 7.62xP(P≥2)
Housing Material	PA 66	PA 66
Cover	PA 66	PA 66
Contact	Brass, Tin Plated	Brass, Tin Plated
Spring	Stainless Strip Steel	Stainless Strip Steel
Wire Size	14 ~ 24AWG	14 ~ 24AWG
PCB Hole Diameter	1.4mm	1.4mm
Operating Temperature	-40°C to +105°C	-40°C to +105°C

TECHNICAL DATA

Connection in acc. with standard EN-VDE		
Nominal Current I _N	16A	16A
Nominal Cross Section	2.5mm ²	2.5mm ²
Maximum load current	16A	16A
Insulating Material	PA	PA
Inflammability class acc. to UL94	V0	V0
Nominal voltage, UL/CUL	300V	300V
Nominal current, UL/CUL	10A	10A

