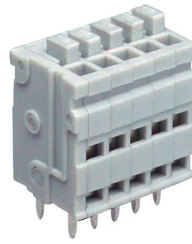
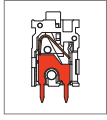


MX442 PCB Spring Type Terminal Block



DIMENSIONS/POSITIONS

MX442-254

Pitch	2.54mm
Poles	2 ~ 20Poles
Dimension A	2.54mm
Length	$A = 2.54 \times P + 1.50 \text{mm} (P \geq 2)$
Housing Material	PA 66
Cover	PA 66
Contact	Copper, Tin Plated
Spring	Stainless Strip Steel
Wire Size	20 ~ 28AWG
PCB Hole Diameter	1.1mm
Operating Temperature	-40°C to +105°C

TECHNICAL DATA

Connection in acc. with standard EN-VDE	
Nominal Current I_N	5A
Nominal Cross Section	
Maximum load current	5A
Insulating Material	PA
Inflammability class acc. to UL94	V0
Nominal voltage, UL/CUL	150V
Nominal current, UL/CUL	5A

